

Winter 2021 Newsletter

Cowley County Historical Society and Museum



Here we are, already 2021. What a year 2020 was, as I'm sure everyone will agree. The board of directors has taken Covid seriously and the museum remains closed to keep everyone safe and well. 2021 is starting with the hope of vaccine availability and the promise of better days to come.

When the museum reopens there will be some new displays and updates to current displays. Our annual display "Celebrate 150 years of Cowley County" will remain up another year. This exhibit highlights memorable events of the past 150 years in Cowley County. As mentioned in the article by Cheri Nichols, there is a new large art display on the main level next to the office. Most of the paintings have been in storage for many years and are now waiting to be rediscovered by a new audience. The technology room has a few new additions with items from more recent years. There is also a new sports display in the alcove in this room showing many sports legends from the area. Additionally, a new table display features china and glassware from a bygone age. Both medical and fashion exhibits have been updated. Currently, the toy room and the farm room displays are having changes made to them. We look forward to holding an open house after reopening to share all of this with the community.

I would like to take this time to thank all board members, listed to the right, who have worked hard to continue to improve the museum during the pandemic. I would also like to thank our coordinator, Nancy Cowlshaw, for doing her part.

Here's to a successful 2021.

— Janet Hostetter, board president.

In This Issue:

- * Art Wall and Collection Display curated by Cheri and Walt Nichols.
- * New additions

Below, *Floral Arrangement* by Sue Jean Covacevich.



CCHS Board of Directors

Cindy Goertz
Janet Hostetter
Jody Lawrence
Gary Learned
Madison Metzinger
Bill Mueller
Cheri Nichols
Elaine Rankin
Sharry Turner

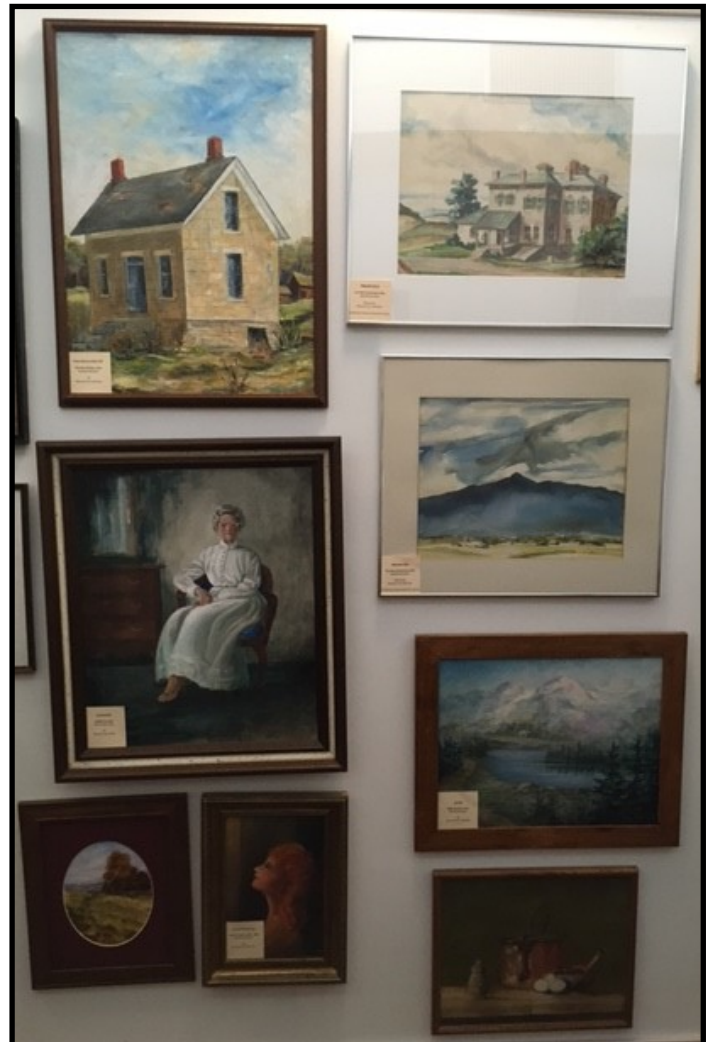


Funds generated last year by the barn quilt raffle were earmarked for the museum's new art display. Many paintings in our collection have been in storage and some new ones were recently donated. Several oil and watercolor paintings by Sue Jean Covacevich Boys were gifted by her daughter, Teresa Grana. We also acquired sections of the mural Sue Jean painted for the First National Bank (now RCB) that are newly framed and on display. Other works by Grace Raymond, Louis Caton, Mary Jo Williams along with Cowley County artists are showcased. Additional paintings have been added to the rest of the museum at large, with more to come. Cheri Nichols

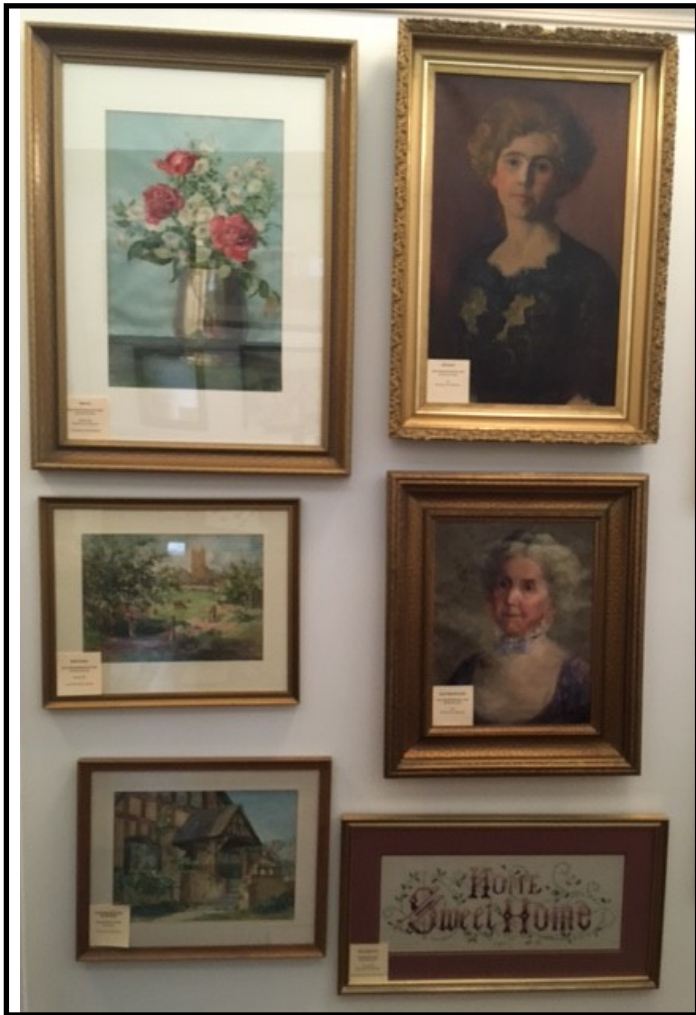
Walt and Cheri Nichols, above with pencil drawing of the museum, artist unknown.



Above, First National Bank Murals by Sue Jean Covacevich Boys. Right, all art by Cowley County artists.



Grace Russel Raymond, below.



Peaceful View by Louis Caton, bottom.



All restoration, framing, and hanging of paintings done by Walt Nichols, above, with the Linoleum Block print he made of the First United Methodist Church of Winfield.
A very big thank you to the Nichols and Thomas Lee for all their hard work and vision in creating the new display.

New Additions

- D.A. Millington (Winfield founder) - furniture, right
- Dr. Graham (Winfield founder) - daybed, bowler and cane, below
- Antique china and glass display, bottom left
- Sports memorabilia display, bottom right.



BOOKS:

Celebrate Winfield History Books 2001-2011 (SALE)	\$8.00
Celebrate Winfield History Books 2012, 2015	\$15.00
Celebrate Cowley County History 2016-current	\$15.00
Winfield's Golden Era of Sports:	\$15.00
History of CC KS. The Settlers Vol. I: (out of stock)	
History of CC KS. The Indians Vol. II:	\$33.00
Southwestern College:	\$21.99
Winfield – Postcard History:	\$21.99
All of Jerry Wallace's paperback books	\$10.00

Prices include Sales Tax.

Shipping/handling is an additional \$4.00

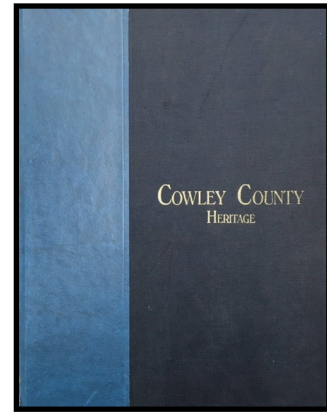
To purchase please stop by the museum or check out our website www.cchsm.com. Credit Cards and Paypal are accepted.

You may also send a check or money order with a list of books to:
CCHSM

1011 Mansfield

Winfield, KS 67156

Or email us at: cchsm@kans.com



Interested in purchasing the Cowley County Heritage book, Volume 1? We are currently sold out. However, if a sufficient number of perspective buyers is reached then we'll submit a new order. Please contact the museum if you are interested.

Commemorative Bricks

There are commemorative bricks for sale which make great memorials and support the museum. The bricks border the walkway from the parking lot to the front steps. To purchase, forms can be found on the table by the books for sale or contact Museum Board member Elaine Rankin.

The following are the levels of donations. Flat red bricks with 2 lines of 12 characters each for a \$75 donation. Flat red bricks with 3 lines of 12 characters each for \$100 donation. A contrasting brick with 12 characters each for a \$500 donation. Fewer letters may be used if you wish, such as a significant year or initials.



AmazonSmile (www.smile.amazon.com) is a simple and automatic way for you to support your favorite charitable organization every time you shop, at no cost to you. When you shop at smile.amazon.com, you'll find the exact same low prices, vast selection and convenient shopping experience as Amazon.com, with the added bonus that Amazon will donate a portion of the purchase price to your favorite charitable organization. Just choose the Cowley County Historical Society Museum to support.



All donations, both monetary and historical artifacts, are greatly appreciated. Our building is over 140 years old and requires significant ongoing maintenance in addition to operating costs. We continue to be a no fee museum and we have no plans to change that. Your continued support will allow us to best serve the community.

We are currently in need of boys' toys and anything from diversified ethnic groups. We are seeking to add a woman's coat from the 1960's to complete a fashion display.

These businesses support us—won't you support them? (We hope to add more during the coming months.)

Premier:



RCB Bank
900 Main St
Winfield, KS 620-221-1650

Gold:

A.C. Veterinary Clinic

2800 N. Summit
Arkansas City, KS 620-442-4990

Community National Bank & Trust

1112 Main St
Winfield, KS 620-221-1400

Daniels Ready Mix

2016 Country Club Rd
Winfield, KS 620-221-9060

Home on the Range

512 Main St
Winfield, KS 620-402-6700

Miles Funeral Service

4001 9th Ave
Winfield, KS 620-221-1111

Webber Land Co

810 Loomis,
Winfield, KS 620-221-7181

Winfield Plumbing & Heating

1910 Wheat Rd
Winfield, KS 620-221-2210

Silver:

The Barns Timber Creek
Brooks Chiopractic
Cowley Courier/Traveler
CPA Solutions
Dawson Monument Co.
Dr. David Parsons
Edw B Stephenson & Co., CPAs Chartered
Galaxie Business Equipment, Inc
Graves Drug
Grouse Valley Equipment—Rich Helsel
Taylor & Krusor, LLC
Sunflower Ob-Gyn PA
Walmart
Winfield Veterinary Hospital

FUTURE EVENTS

Events may change depending on Covid-19 and the weather. Watch for any changes on our website.

2021

Voices from the Past Cemetery Tour at Highland Cemetery has been postponed until Sunday, April 25. ALL tickets purchased for the October 25th event will be honored for the April 25th tour. This includes ALL tickets purchased online. We hope you put this new date on your calendar. It will be the same program just a new date.

**Cowley County
Historical Society**

1011 Mansfield St.
Winfield, KS 67156
620.221.4811

Email:
cchsm@kans.com

Find us on the Web!

Watch for updates
www.cchsm.com



The Cowley County Historical Society dates from 1931 with major reorganization and move to our present location in 1967. The CCHS's mission is to preserve and make available the colorful history of our county. We also support and encourage activities pertaining to local county history. Our bookstore showcases an assortment of items about local history. The Society also has a fine collection of historical records and vintage photographs.

Sharing the Past with the Future